

Light efficiency:

37 Lumen/Watt

Light quality:

CRI: 95.2

Color temperature:

2349 K

Output: 468 lm

Peak: 159 cd

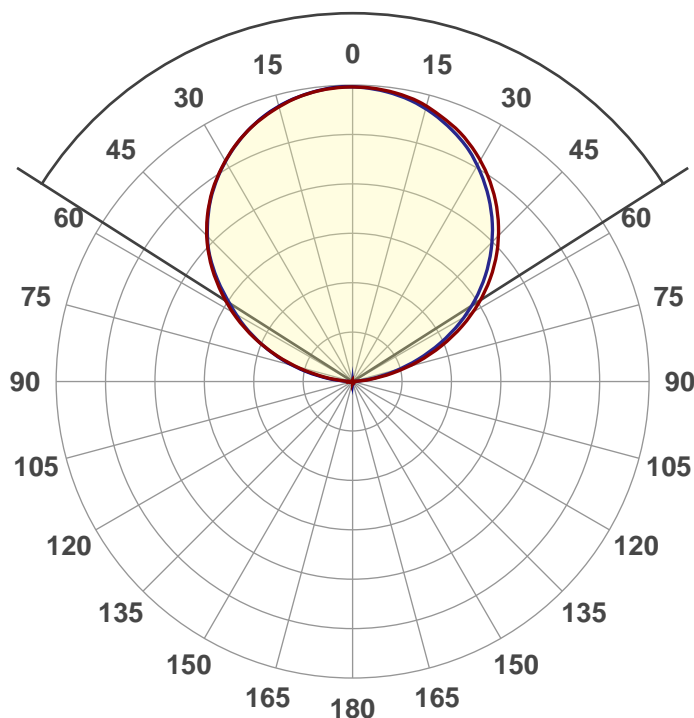
Power: 12.5 W

PF: 0.54



Beam angle

115°



Product name:

Flex One HO Interior 2400K

Test:

Full On (1ft of Flex)

Date and time:

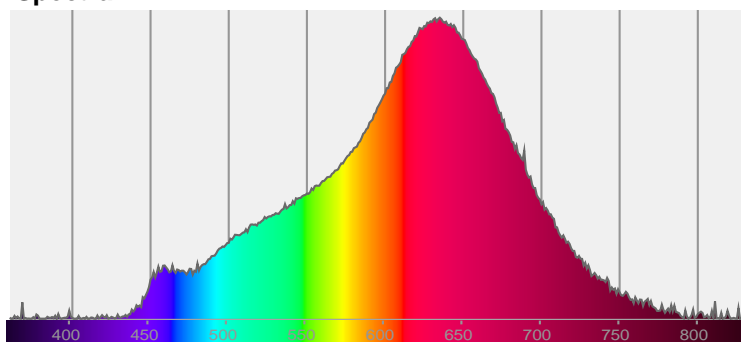
4/10/2017

Description:

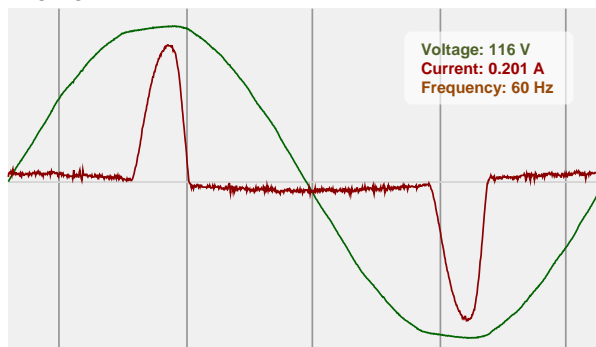


CIE 1931
x: 0.493
y: 0.418

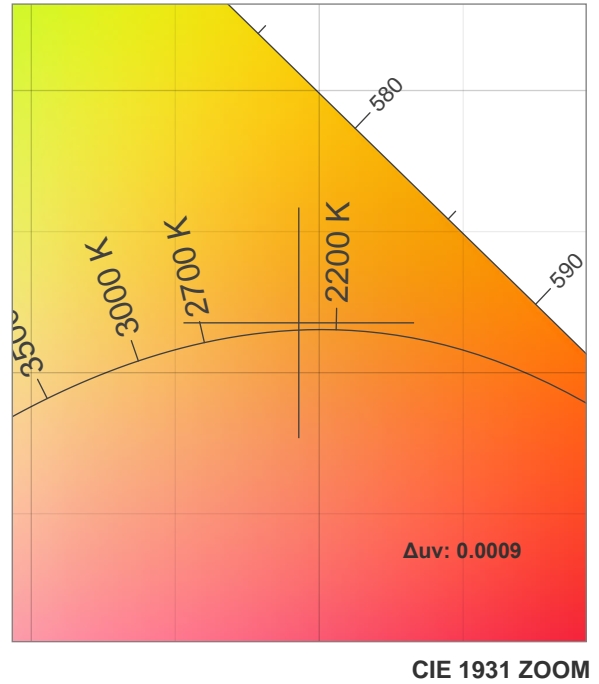
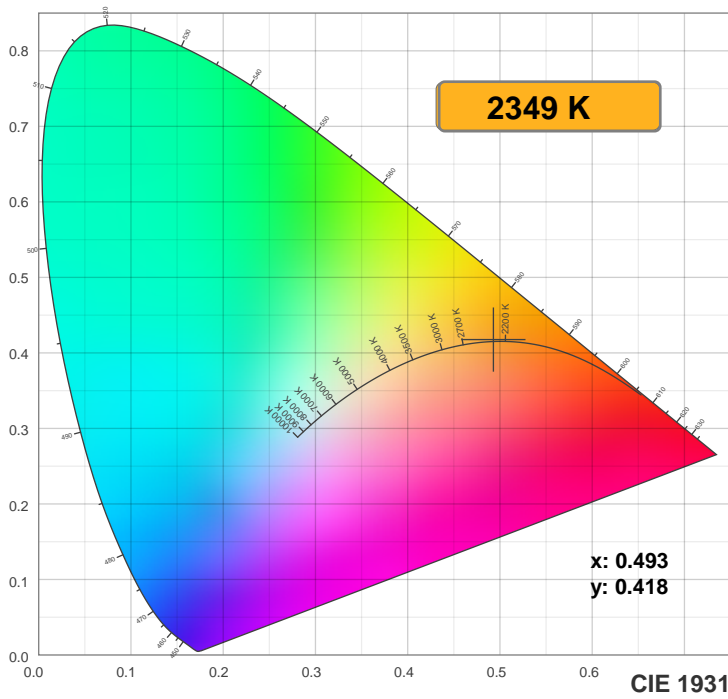
Spectra



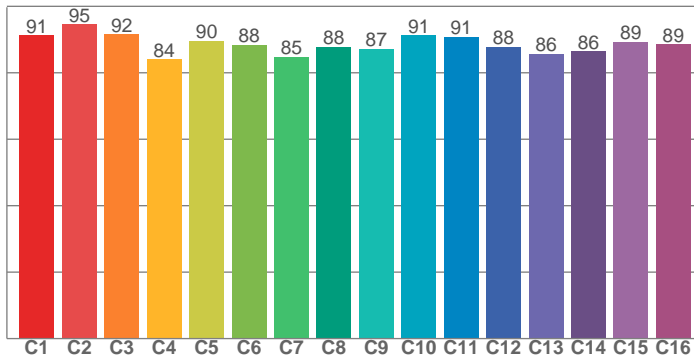
Power



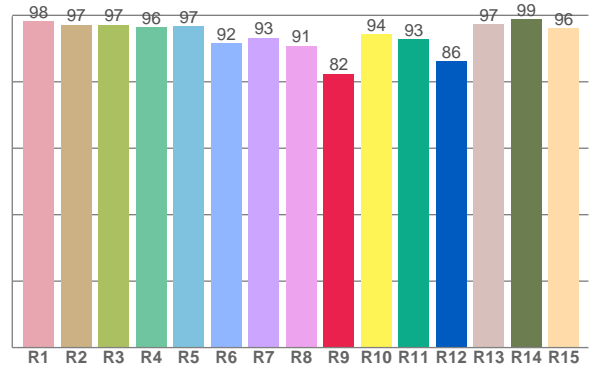
Color details



TM30: 89.0



CRI: 95.2 (R1-R8)



CRI R values, only R1-R8 are used to calculate final CRI value

R1	R2	R3	R4	R5	R6	R7	R8	R9	R10	R11	R12	R13	R14	R15
98.3	97.1	97.2	96.5	96.6	91.7	93.3	90.8	82.4	94.3	92.7	86.2	97.4	98.9	96.1

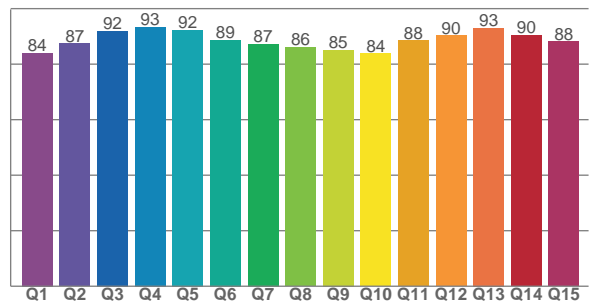
TM30 C values, 16 binned values out of total of 99 C values

C1	C2	C3	C4	C5	C6	C7	C8	C9	C10	C11	C12	C13	C14	C15	C16
91.3	94.6	91.5	84.0	89.6	88.3	84.8	87.9	87.2	91.3	90.8	87.7	85.7	86.4	89.3	88.6

CQS Q values

Q1	Q2	Q3	Q4	Q5	Q6	Q7	Q8	Q9	Q10	Q11	Q12	Q13	Q14	Q15
84.0	87.4	92.0	93.3	92.2	88.7	87.2	86.1	85.1	83.9	88.5	90.4	93.0	90.4	88.1

CQS: 87.9



Color parameters

Color temperature	Color rendering index	Red component	Color fidelity	Color gamut	Color quality scale	Color coordinate cie 1931	Color coordinate cie 1931	Color coordinate	Color coordinate	Color divition from black body
CCT	CRI	CRI R9	TM30 Rf	TM30 Rg	CQS	x	y	u	v	Δuv
2349 K	95.2	82.4	89.0	95.8	87.9	0.493	0.418	0.281	0.357	0.0009

TM30 details

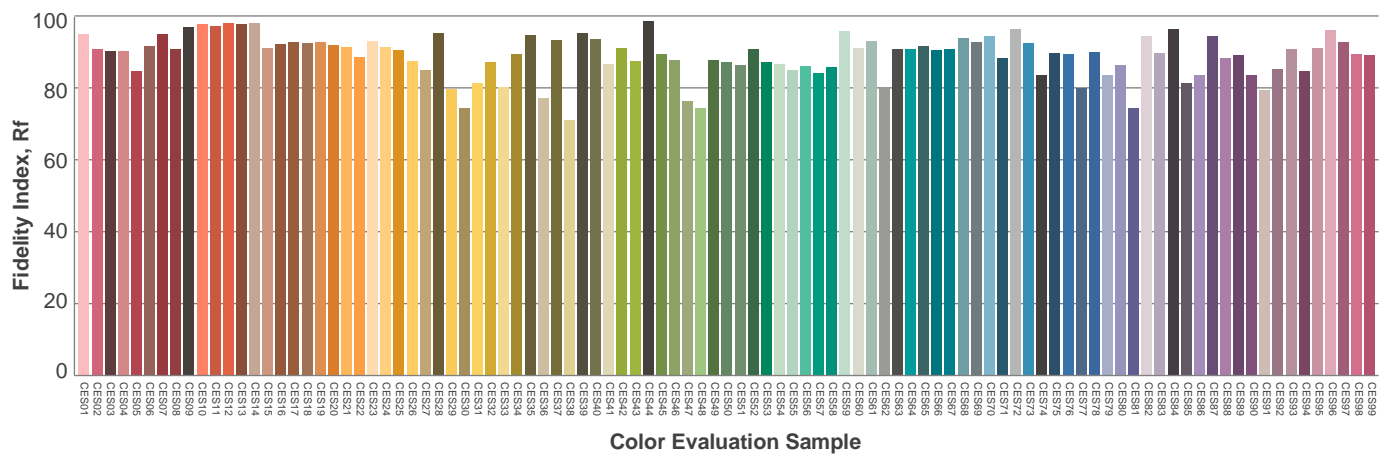
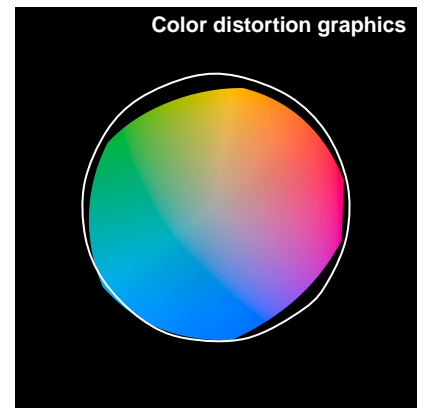
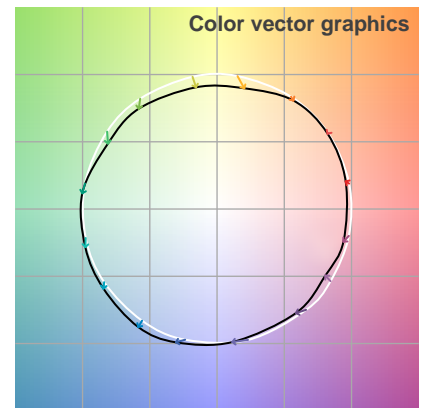
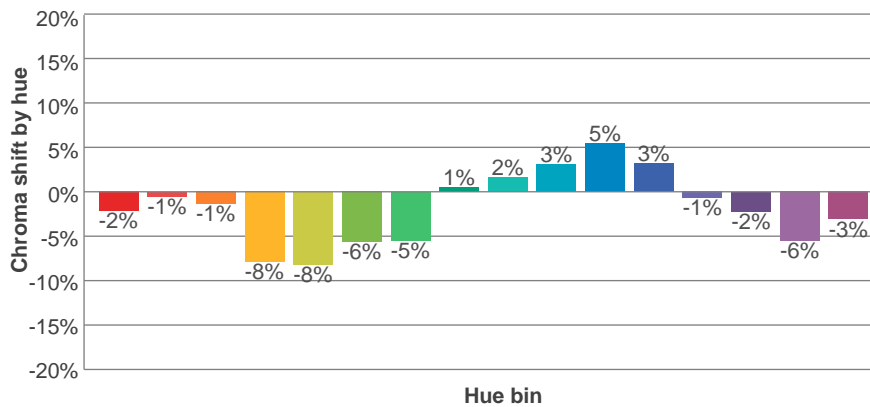
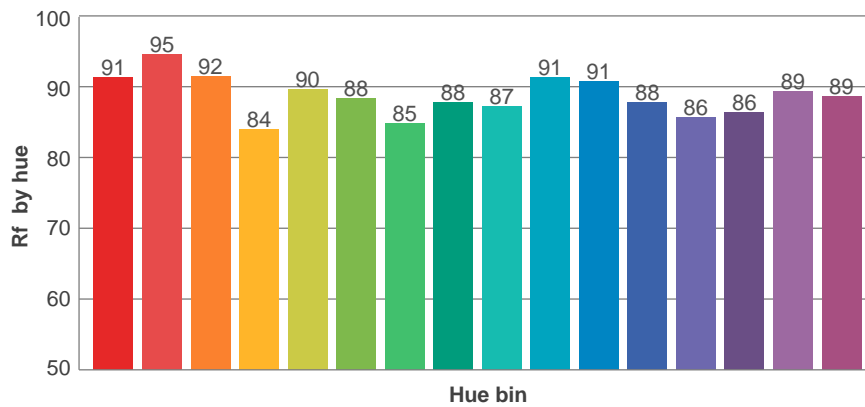
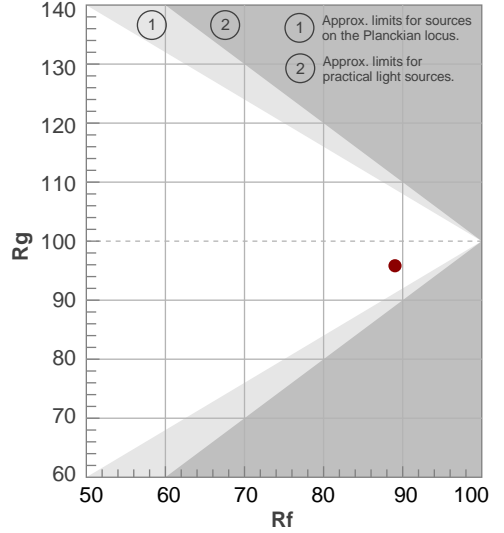
Rf 89.0

Fidelity index R_f

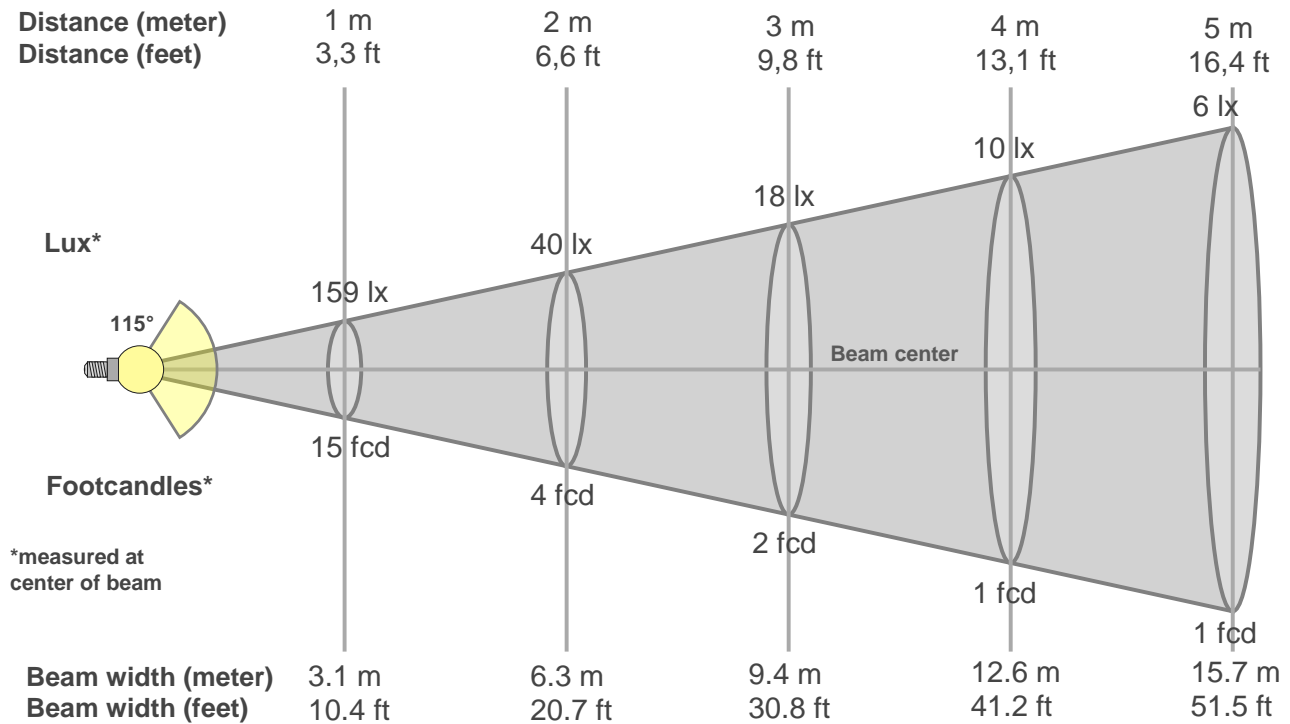
Rg 95.8

Gammut index Rg

		Graphic shifts (%)	
Hue Bin	R_i	Chroma	Hue
1	91	-2%	2%
2	95	-1%	0%
3	92	-1%	-3%
4	84	-8%	-7%
5	90	-8%	-1%
6	88	-6%	5%
7	85	-5%	7%
8	88	1%	7%
9	87	2%	7%
10	91	3%	4%
11	91	5%	0%
12	88	3%	-6%
13	86	-1%	-12%
14	86	-2%	-7%
15	89	-6%	1%
16	89	-3%	-5%



Beam details



Beam intensities from 1-20m

1m	2m	3m	4m	5m	6m	7m	8m	9m	10m	11m	12m	13m	14m	15m	16m	17m	18m	19m	20m
3.3ft	6.6ft	9.8ft	13.1ft	16.4ft	19.7ft	23ft	26.2ft	29.5ft	32.8ft	36.1ft	39.4ft	42.7ft	45.9ft	49.2ft	52.5ft	55.8ft	59.1ft	62.3ft	65.6ft
159lx	40lx	18lx	10lx	6lx	4lx	3lx	2lx	2lx	2lx	1lx	1lx	1lx	1lx	1lx	1lx	1lx	0lx	0lx	0lx
14.8fcd	3.7fcd	1.6fcd	0.9fcd	0.6fcd	0.4fcd	0.3fcd	0.2fcd	0.2fcd	0.1fcd	0.1fcd	0.1fcd	0.1fcd	0.1fcd	0.1fcd	0.1fcd	0.1fcd	0fcd	0fcd	0fcd

Intensities in 0° c-plane

0°	5°	10°	15°	20°	25°	30°	35°	40°	45°	50°	55°	60°	65°	70°	75°	80°	85°	90°	95°
159	158	156	153	149	144	137	130	121	111	100	88	75	61	47	32	18	7	1	0
100%	100%	99%	97%	94%	91%	86%	82%	76%	70%	63%	55%	47%	38%	29%	20%	11%	4%	1%	0%

Intensities in 90° c-plane

0°	5°	10°	15°	20°	25°	30°	35°	40°	45°	50°	55°	60°	65°	70°	75°	80°	85°	90°	95°
159	158	157	154	149	144	137	129	121	111	99	86	73	60	47	33	20	9	2	0
100%	100%	99%	97%	94%	91%	86%	81%	76%	70%	62%	54%	46%	38%	29%	21%	13%	6%	1%	0%

Intensities in 180° c-plane

0°	5°	10°	15°	20°	25°	30°	35°	40°	45°	50°	55°	60°	65°	70°	75°	80°	85°	90°	95°
159	158	157	154	149	144	138	130	121	111	100	88	75	61	46	31	17	6	1	0
100%	100%	99%	97%	94%	91%	87%	82%	76%	70%	63%	55%	47%	38%	29%	20%	11%	4%	0%	0%

Intensities in 270° c-plane

0°	5°	10°	15°	20°	25°	30°	35°	40°	45°	50°	55°	60°	65°	70°	75°	80°	85°	90°	95°
159	158	156	152	147	142	134	126	117	106	95	83	69	55	41	27	14	4	1	0
100%	99%	98%	96%	93%	89%	85%	79%	73%	67%	60%	52%	44%	35%	26%	17%	9%	3%	0%	0%

Beam angle 50%	Field angle 10%	Cutoff angle 2,5%	Intensity ratio in 120° cone	Intensity ratio in 90° cone
115°	161.1°	172.8°	0.8%	0.5%

UGR

Glare Evaluation According to UGR

p Ceiling	70	70	50	50	30	70	70	50	50	30
p Walls	50	30	50	30	30	50	30	50	30	30
p Floor	20	20	20	20	20	20	20	20	20	20
Room size X Y	Viewing direction at right angles to lamp axis					Viewing direction parallel to lamp axis				
n/a	n/a	n/a	n/a	n/a	n/a	n/a	n/a	n/a	n/a	n/a
n/a	n/a	n/a	n/a	n/a	n/a	n/a	n/a	n/a	n/a	n/a
n/a	n/a	n/a	n/a	n/a	n/a	n/a	n/a	n/a	n/a	n/a
n/a	n/a	n/a	n/a	n/a	n/a	n/a	n/a	n/a	n/a	n/a
n/a	n/a	n/a	n/a	n/a	n/a	n/a	n/a	n/a	n/a	n/a
n/a	n/a	n/a	n/a	n/a	n/a	n/a	n/a	n/a	n/a	n/a
n/a	n/a	n/a	n/a	n/a	n/a	n/a	n/a	n/a	n/a	n/a
n/a	n/a	n/a	n/a	n/a	n/a	n/a	n/a	n/a	n/a	n/a
n/a	n/a	n/a	n/a	n/a	n/a	n/a	n/a	n/a	n/a	n/a
n/a	n/a	n/a	n/a	n/a	n/a	n/a	n/a	n/a	n/a	n/a
n/a	n/a	n/a	n/a	n/a	n/a	n/a	n/a	n/a	n/a	n/a
n/a	n/a	n/a	n/a	n/a	n/a	n/a	n/a	n/a	n/a	n/a
n/a	n/a	n/a	n/a	n/a	n/a	n/a	n/a	n/a	n/a	n/a
n/a	n/a	n/a	n/a	n/a	n/a	n/a	n/a	n/a	n/a	n/a
n/a	n/a	n/a	n/a	n/a	n/a	n/a	n/a	n/a	n/a	n/a
n/a	n/a	n/a	n/a	n/a	n/a	n/a	n/a	n/a	n/a	n/a
n/a	n/a	n/a	n/a	n/a	n/a	n/a	n/a	n/a	n/a	n/a
n/a	n/a	n/a	n/a	n/a	n/a	n/a	n/a	n/a	n/a	n/a
n/a	n/a	n/a	n/a	n/a	n/a	n/a	n/a	n/a	n/a	n/a
n/a	n/a	n/a	n/a	n/a	n/a	n/a	n/a	n/a	n/a	n/a
Variation of the observer position for the luminaire distance S										
n/a	n/a					n/a				
n/a	n/a					n/a				
n/a	n/a					n/a				
Standard table	n/a					n/a				
Correction summand	n/a					n/a				
Corrected glare indices referring to 468 lm total luminous flux										

UGR error. Make sure you have installed the LDT editor from Dialux.

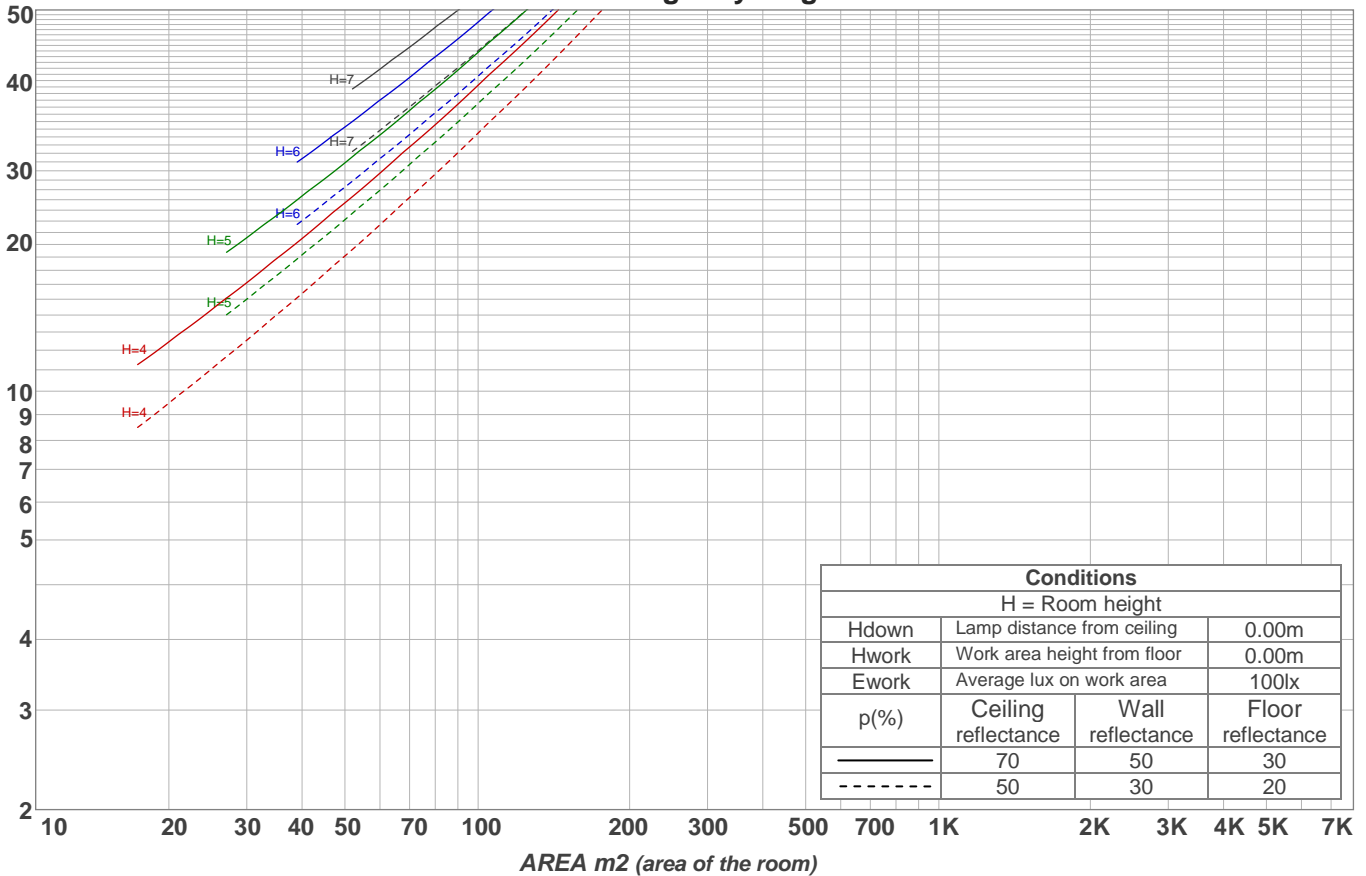
Light planning

Coefficients of Utilization

Ceiling reflectance	80				70				50			30			10			0
Wall reflectance	70	50	30	10	70	50	30	10	50	30	10	50	30	10	50	30	10	0
Floor reflectance	20	20	20	20	20	20	20	20	20	20	20	20	20	20	20	20	20	0
RCR	(RCR: Room Cavity Ratio) Room Values are expressed as percentage of Lumens delivered to the task surface																	
0	119	119	119	119	116	116	116	116	111	111	111	106	106	106	102	102	102	100
1	109	104	100	96	106	102	98	94	97	94	91	93	91	88	90	87	85	83
2	99	90	83	78	96	88	82	77	85	79	75	81	77	73	78	75	71	69
3	90	79	71	64	87	78	70	64	75	68	63	72	66	61	69	64	60	58
4	82	70	61	54	80	69	60	54	66	59	53	64	57	52	61	56	52	49
5	75	62	53	47	73	61	53	46	59	52	46	57	51	45	55	49	45	43
6	70	56	47	41	68	55	47	40	53	46	40	52	45	40	50	44	39	37
7	65	51	42	36	63	50	42	36	48	41	35	47	40	35	46	39	35	33
8	60	46	38	32	58	46	37	32	44	37	32	43	36	31	42	36	31	29
9	56	43	34	29	55	42	34	29	41	33	28	40	33	28	39	32	28	26
10	53	39	31	26	51	39	31	26	38	31	26	37	30	26	36	30	25	24

LAMPS (number of lamps)

Luminaire budgetary diagram



Zonal Lumen Summary

0°-10°	10°-20°	20°-30°	30°-40°	40°-50°	50°-60°	60°-70°	70°-80°	80°-90°
15.1 lm	43.3 lm	66.1 lm	80.6 lm	84.7 lm	76.9 lm	58.6 lm	32.6 lm	7.59 lm
90°-100°	100°-110°	110°-120°	120°-130°	130°-140°	140°-150°	150°-160°	160°-170°	170°-180°
0.291 lm	0.282 lm	0.274 lm	0.268 lm	0.259 lm	0.233 lm	0.194 lm	0.120 lm	0.040 lm